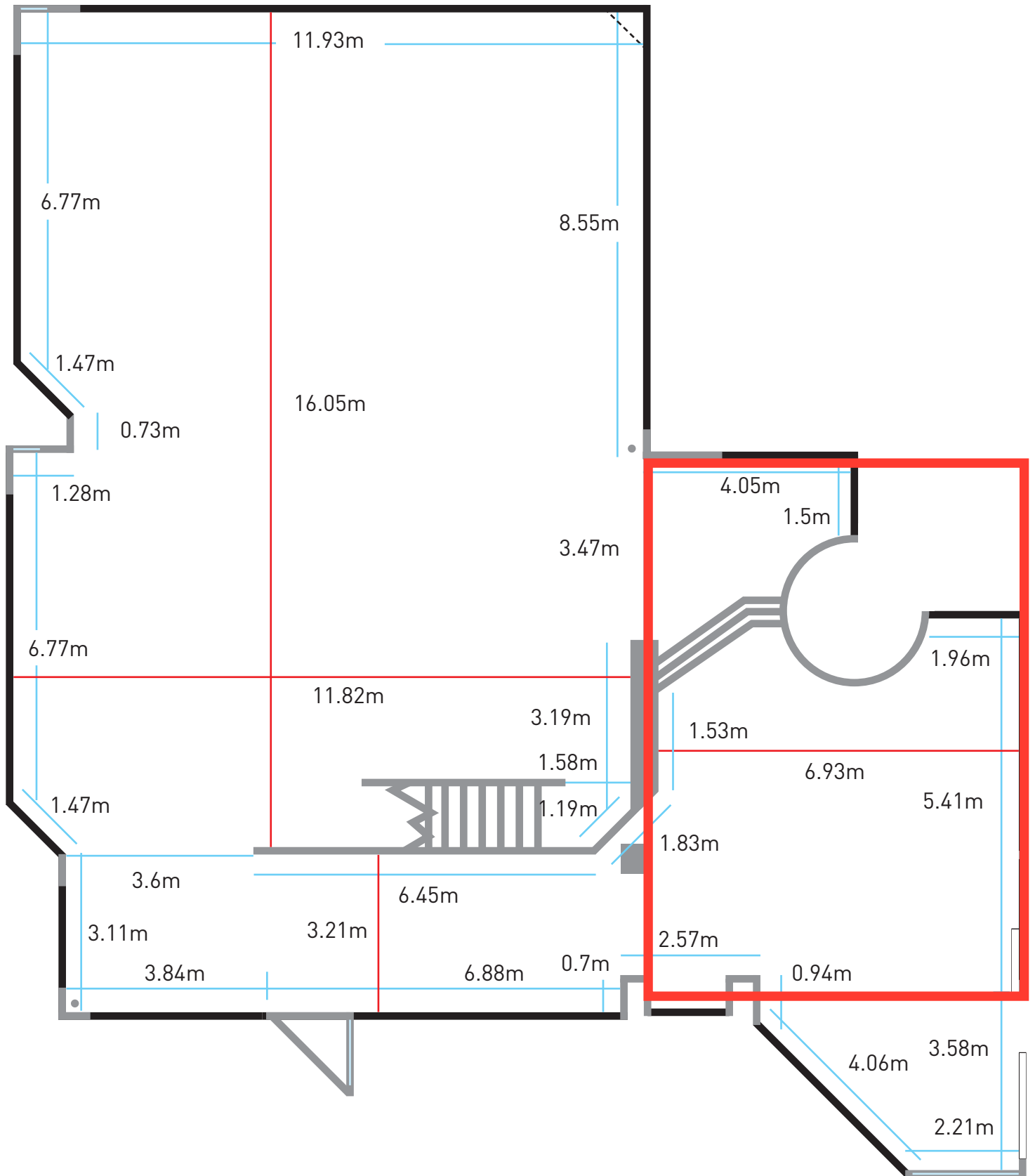


The Douglas Hyde Gallery
 Gallery 1 - typical hanging areas



The Douglas Hyde Gallery
 Gallery 1 - floor measurements

Main Gallery space - floor to ceiling: 6.1m
Main Gallery walls - floor to top of plaster: 5.68m

Lighting tracks - floor to bottom of lighting track: 5.25m

Height of balcony - floor to top of concrete ledge (not inc. rails): 3.9m

Lower Gallery space beside stairwell cylinder - floor to ceiling: 2.47m

Lowest area at the top of the ramp - floor to ceiling: 2.04m

Alcove area beside stairwell cylinder - floor to ceiling: 2.06m

Shadow gap between floor and base of plaster wall: 0.04m